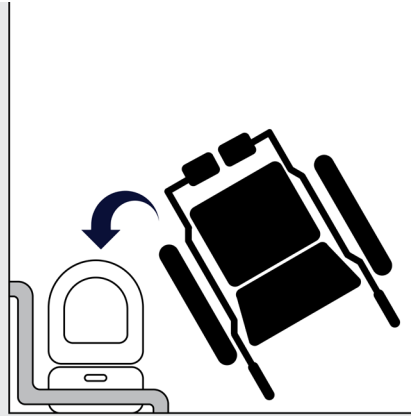
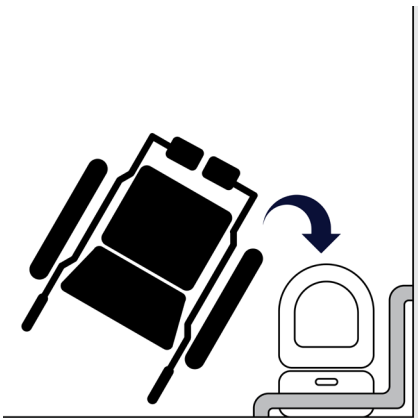


LH, RH OR AMBULANT SIGN SELECTION GUIDE



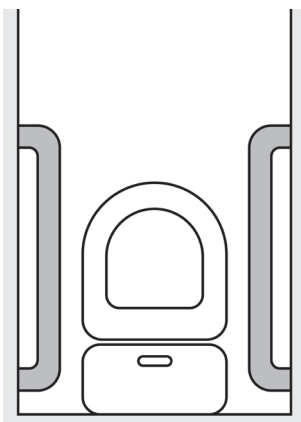
ACCESSIBLE TOILET LH (LEFT-HAND-TRANSFER)

Specifically designed to provide enough space to accommodate wheelchair access and assistance when transferring from wheelchair to toilet. In this case the user will transfer themselves from the left-hand-side.



ACCESSIBLE TOILET RH (RIGHT-HAND-TRANSFER)

Specifically designed to provide enough space to accommodate wheelchair access and assistance when transferring from wheelchair to toilet. In this case the user will transfer themselves from the right-hand-side.



AMBULANT TOILET/CUBICLE (DUAL TRANSFER)

Specifically designed for those with ambulant disabilities that do not require the extra space that is provided by Accessible toilets. Primarily, they are for those that do not require the use of a wheelchair, ie. Those with crutches, walking frames, arthritis etc.

If you require any further clarification of information, please don't hesitate to contact us

SALES@BRAILLESIGNSUPPLIES.COM.AU | 1300 302 655 | BRAILLESIGNSUPPLIES.COM.AU